

Larsen & Shaw, *the hinge people*® Since 1919, offers quality hinge solutions by providing customers with responsive, reliable on-time delivery at a competitive price.

Type 304 stainless steel hinges are commonly used in applications where corrosion resistance and longevity are key requirements along with aesthetics. For your marine, emergency vehicle, tonneau cover, truck toolbox or other stainless hinge application, trust Larsen & Shaw to provide a high quality hinge that complements your product.

We offer in-house brushing and polishing to provide a superior finish and protect this through specialized packaging.

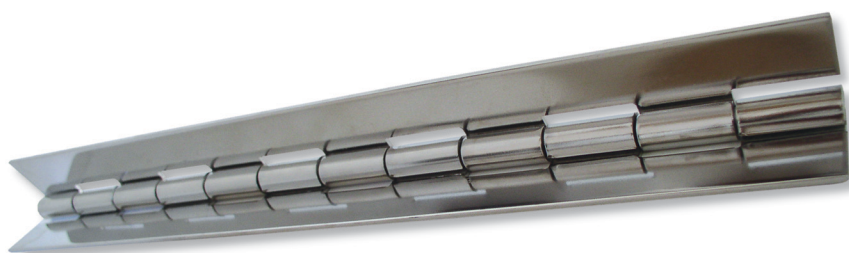
Hinges may be ordered directly from our stock, or customized to suit your application. We have the broadest range of stainless steel hinge in the industry, from 0.024" to 0.180" thick and are committed to having the shortest lead-time of any manufacturer.

For detailed standard product information or to submit an electronic request for quote, please refer to our fully searchable database on our website .

Visit our website for more information.

Features

- High Quality Type 304 Stainless Steel (other grades available)
- 0.024" gauge - 0.180" gauge available
- Brushing & polishing
- Fully customizable
- Cleaning available
- Supports the full length of the door



Larsen & Shaw Limited :: t.f 1.800.265.3078

575 Durham Street W :: Box 1420 :: Walkerton :: ON :: Canada :: NOG 2V0 :: www.larsenhinge.com

Material/Pin	Open Widths Available	Knuckle
024/060	3/4 to 2	0.25
030/060	5/8 to 7	0.25
030/080	3/4 to 4	0.50
030/090	3/4 to 4	0.25
037/100	3/4 to 6	0.50
050/125	1 to 5-1/2	0.50
060/125	1 to 8	0.50
060/125	3/4 to 3	1.00
060/187	1-1/4 to 5-3/8	1.00
060/187	1-1/4 to 8	2.00

Material/Pin	Open Widths Available	Knuckle
060/250	1-1/2 to 8	2.00
075/187	3/4 to 3	1.00
075/187	1-1/4 to 8	2.00
075/250	1-1/2 to 5-3/8	1.00
075/250	1-1/2 to 8	2.00
090/250	1-1/2 to 5-3/8	1.00
090/250	1-1/2 to 8	2.00
120/375	2 to 11	2.00
180/500	3 to 14	2.00

